

BROKIS®



# MUFFINS

CM12235

PC852



Download

### COMPONENTS OF PACKAGING:

3x hex screws (M5x30)  
1x hex key  
1x glass shade  
1x wooden body  
1x Ehmman dimmer  
1x light source (bulb)  
1x cotton gloves  
1x installation manual

### WARNING:

**The manufacturer assumes no liability for damage resulting from incorrect assembly. When unpacking the light, do so with regard for its material composition – the main components are made of glass.**

**Wear the cotton gloves included with the light when unpacking and assembling it.**

**Instalation time: 15 minutes / 1 person**



BROKIS®

BROKIS S.R.O.  
ŠPANIELOVA 1315/25  
163 00 PRAHA 6 - ŘEPY  
CZECH REPUBLIC

ORG. ID 64940799  
VAT ID CZ64940799  
C 42174 MĚSTSKÝ SOUD  
V PRAZE

TEL +420 567 211 517  
TECHNICAL@BROKIS.CZ  
INFO@BROKIS.CZ  
WWW.BROKIS.CZ



### CLEANING THE GLASS

**BROKIS applies the highest possible quality standards in manufacturing its lights. Prior to shipping, each light undergoes several quality controls and stages of cleaning. Lights may require additional cleaning as a result of transportation, storage, and the amount of time that passes between packing in our plant and subsequent unpacking by the client. Therefore, we emphasizes cleaning the lights prior to installation.**

**The glass must first be rinsed in hot water, with a dilution of a dish-detergent used to remove all foreign particles and dust. Eventually repeat this basic treatment, if necessary. Afterwards the glass must have a second cleaning using hot water, with a dilution of a de-greaser (such as ammonia or vinegar). The glass must then be thoroughly rinsed with running hot water. Eventually repeat this treatment, if necessary. The glass is then thoroughly dried with a paper towel or a clean soft cotton towel. Only re-assemble the glass to the lamp body, when completely cooled down.**

**Do not use mineral spirits, highly concentrated thinners, or other substances not intended for use on glass surfaces. Also: do not use products, containing silicones – since they will rapidly attract more dust and grease.**

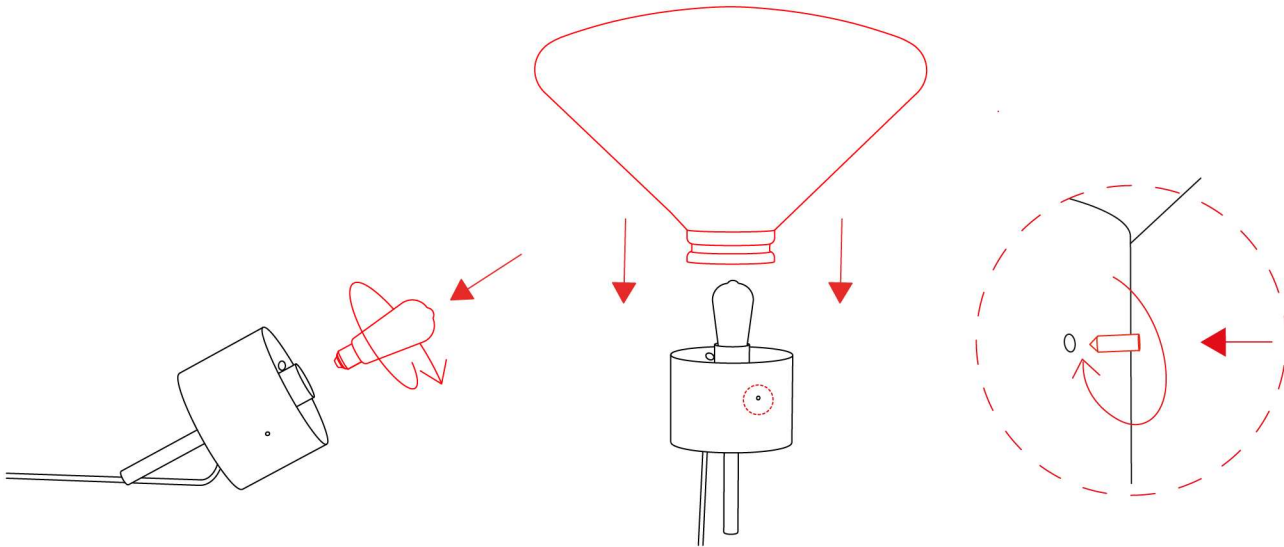
**PRIOR TO SHIPPING, THE FUNCTIONALITY OF EACH LIGHT AND ITS COMPONENTS IS THOROUGHLY TESTED. THE MANUFACTURER ASSUMES NO LIABILITY FOR THE MISHANDLING OF PRODUCTS.**



## 1. INSTALLING THE LIGHT SOURCE AND ASSEMBLING THE LIGHT

Install the light source in the fixture.

Position the glass shade on the wooden body. Insert the three set screws and tighten them until flush with the wooden body. Failure to tighten the screws sufficiently may result in the glass shade falling out of the wooden body; on the other hand, sinking the screws beneath the surface of the wooden body will almost certainly result in damage to the glass shade. The manufacturer assumes no liability for damage resulting from incorrect installation of the set screws.



## 2. SWITCHING ON THE LIGHT

Plug the power cable into an electrical outlet and verify that the light works properly.

